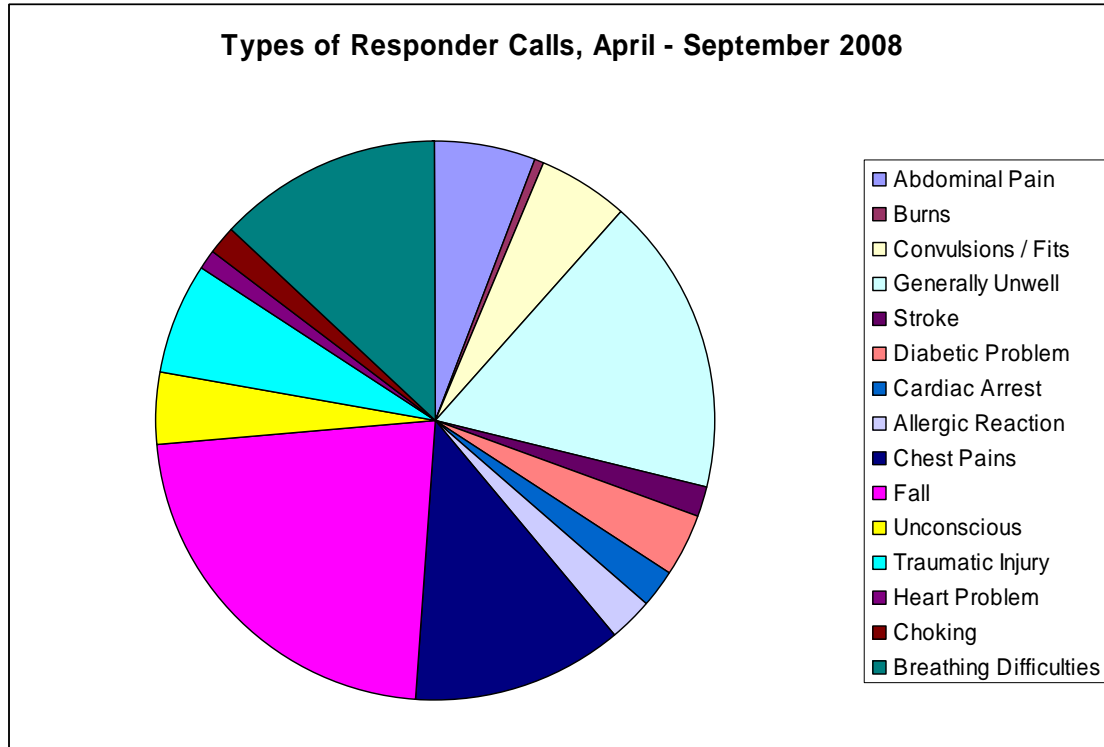




## Surrey Community First Responder Department Report April 2008 – September 2008

Since April we have been pleased to welcome onboard the new Godalming scheme which has proved that schemes in areas which already have ambulance station cover are still in great demand to attend calls when the local ambulances are already committed. Currently Tessa has attended a number of calls in the local area and is soon to be joined by some more responders who are completing their training this month. Cranleigh CFR unit have been very active over the summer while Cranleigh Ambulance Station has been closed for renovation, call numbers have reduced slightly now the ambulance station is open again but between them Gerry and Steve have been doing an excellent job in attending calls all over the Cranleigh area.

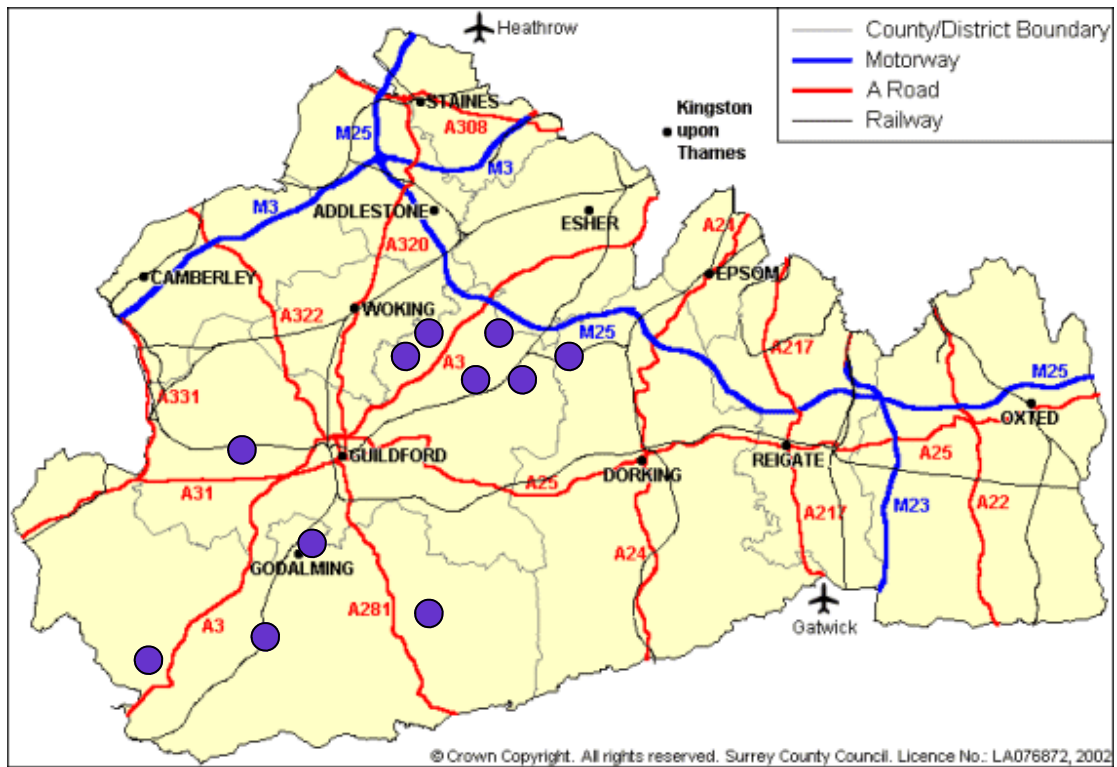
Between the beginning of April 2008 and September 2008 (five months) St John Ambulance Community First Responders have attended **170 emergency '999'** calls on behalf of South East Coast Ambulance Service NHS Trust. I have shown a breakdown of the call types below –



During this period responders have attended four patients in cardiac / respiratory arrest and have attempted to assist in resuscitation alongside the ambulance service.

We are in the process of developing new schemes across the county as our current schemes are mostly based in the south west of Surrey. Anyone who is interested in setting up a new scheme please contact the department via [enquiries-cfr@surrey.sja.org.uk](mailto:enquiries-cfr@surrey.sja.org.uk)

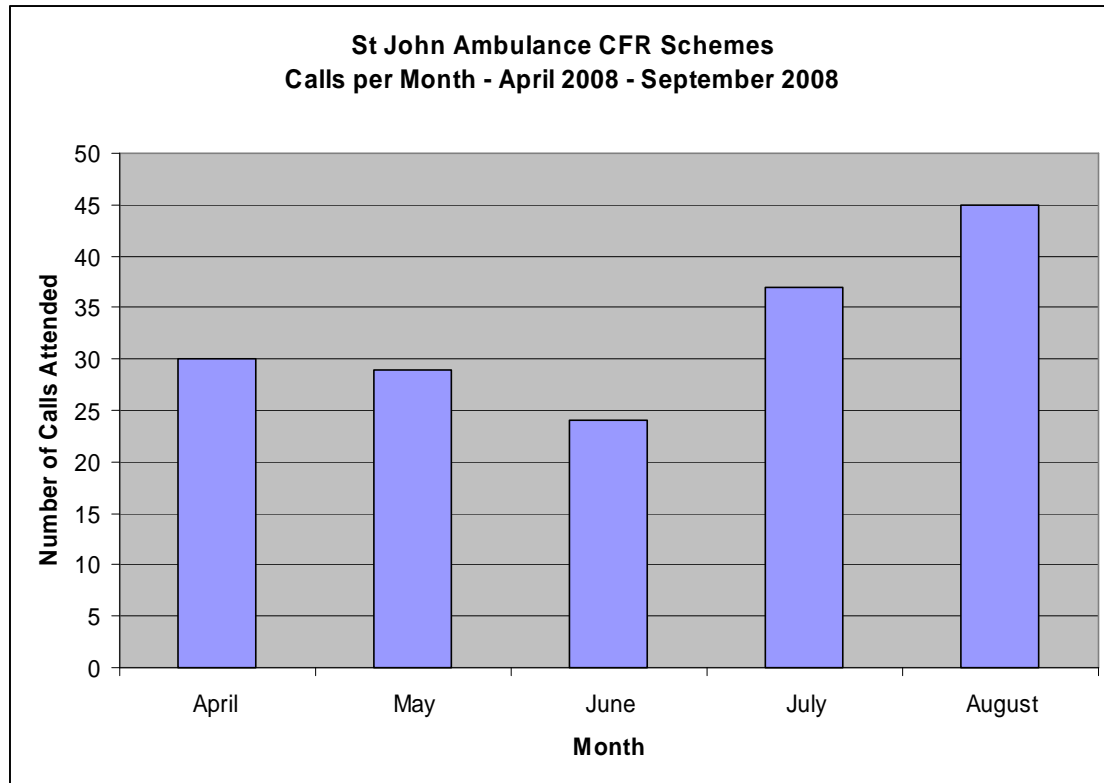
### Map of Current Schemes - Established St John Ambulance CFR Scheme



### Scheme Locations

- |           |              |
|-----------|--------------|
| Effingham | Chiddingfold |
| Horsley   | Churt        |
| Ockham    | Cranleigh    |
| Send      | Godalming    |
| Ripley    | Normandy     |
| Bookham   |              |

During the summer period it always proves difficult to provide maximum cover due to holiday commitments and the increase in call numbers. During the five months our callout rate was broken down as follows -



Looking back at last year we have been busier during April, May and August but our call numbers are down dramatically during July, this year we attended 37 calls and during July 2007 we attended 66!

Thank you to everyone for their hard work as responders or supporters of the CFR departments across the county.

Keep up the excellent work!

*The County CFR Department*